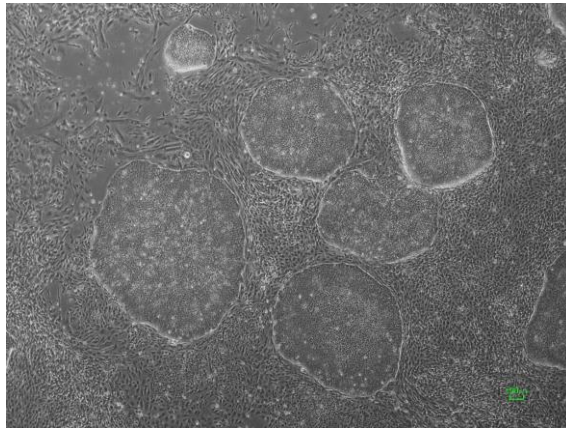


## 【 CiRA-jk-0037 】 Morphology of iPSC colonies

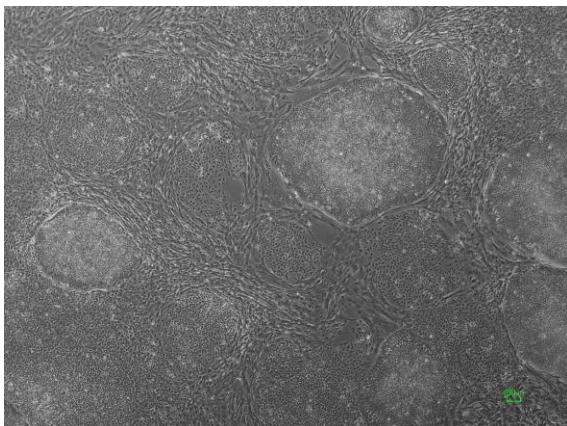
CiRA -jk-0037-A: passage-2



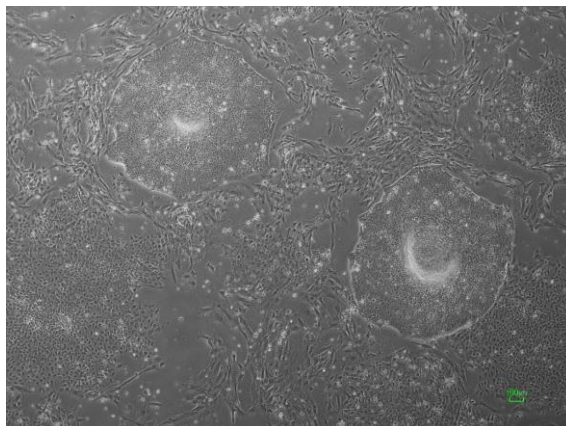
CiRA -jk-0037-B: passage-2



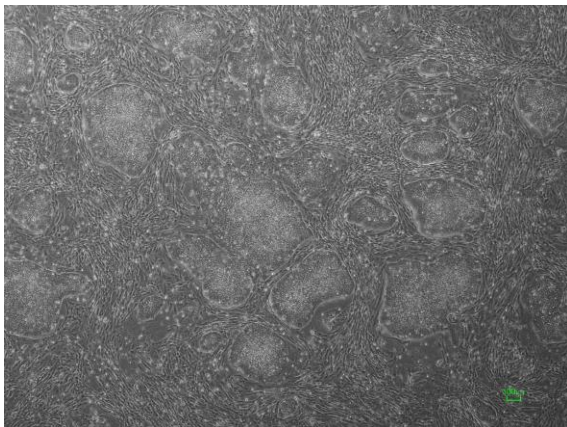
CiRA -jk-0037-C: passage-2



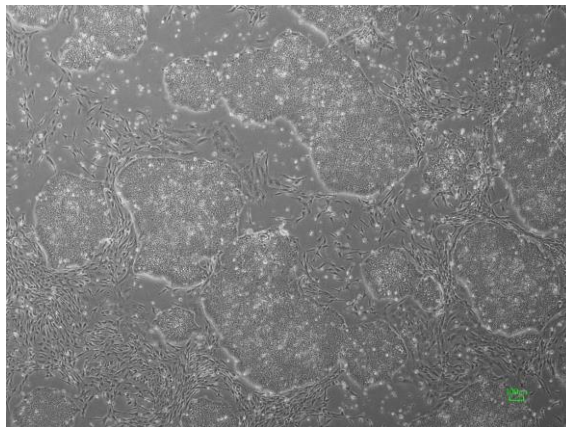
CiRA -jk-0037-D: passage-2



CiRA -jk-0037-E: passage-3



CiRA -jk-0037-F: passage-3



( All images were captured at 4x magnification )